

GIS FILE PATH: \\haleyaldrich.com\share\look_common\42103_North Beach MGP ROW GW\Global\GIS\Maps\2019-02\128366_006_0001_SITE_LOCATION_MAP_NORTH_BEACH.mxd — USER: anichols — LAST SAVED: 1/23/2019 11:31:21 AM



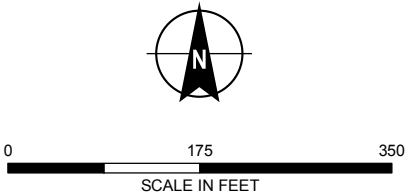
GIS FILE PATH: \\haleyaldrich.com\share\oak_common\42103_North Beach MGP ROW GW\Global\GIS\Maps\2019-02\128300_006_00MB_GW_MARINA_2018_Q3.mxd — USER: anichols — LAST SAVED: 2/12/2019 1:51:10 PM



LEGEND

- MONITORING WELL
- DESTROYED MONITORING WELL
- MULTI-LEVEL MONITORING WELL
- 1893 HISTORICAL SHORELINE AND WHARFS/PIERS
- 1899 HISTORICAL SHORELINE AND WHARFS/PIERS
- HISTORICAL MANUFACTURED GAS PLANT (MGP) SITE BOUNDARY
- HISTORICAL MGP STRUCTURE

- NOTES**
1. ALL LOCATIONS AND DIMENSIONS OF HISTORICAL STRUCTURES AND BOUNDARIES ARE APPROXIMATE.
 2. APPROXIMATE LIMITS OF FORMER MGP SITE BOUNDARIES AND HISTORICAL STRUCTURES DERIVED FROM SANBORN FIRE INSURANCE MAPS (1893, 1899) AND PACIFIC GAS & ELECTRIC MAPS (1908).
 3. APPROXIMATE LOCATION OF HISTORICAL SHORELINES AND WHARFS/PIERS DERIVED FROM SANBORN FIRE INSURANCE MAPS (1893, 1899, 1900).
 4. CONTINUOUS MULTICHANNEL TUBING (CMT) MONITORING WELLS CONTAIN THREE PORTS WITH INCREASING DEPTH, A, B, AND C.
 5. AERIAL IMAGERY SOURCE: CITY AND COUNTY OF SF, 2014



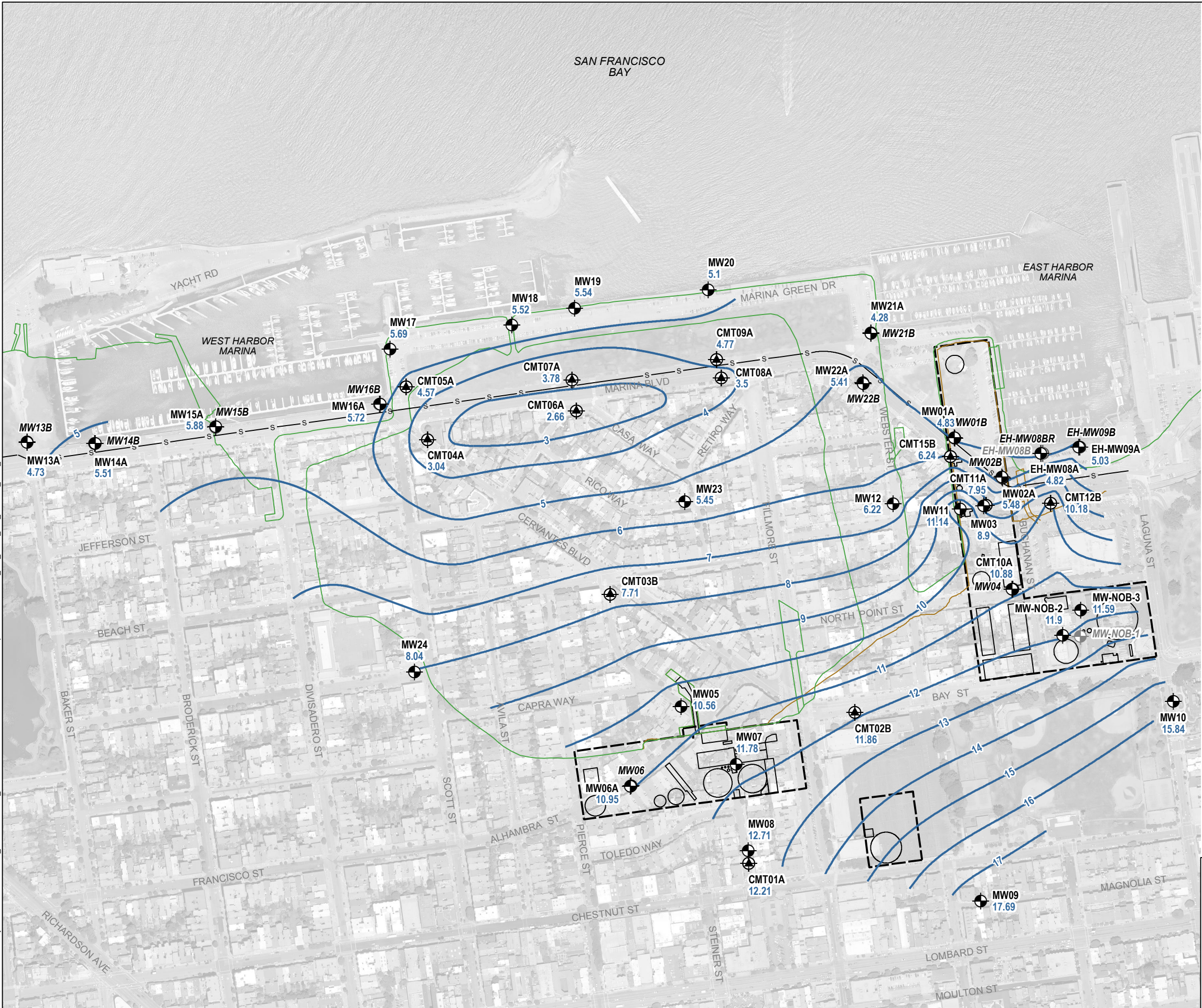
HALEY ALDRICH PACIFIC GAS AND ELECTRIC COMPANY (PG&E)
FORMER NORTH BEACH MANUFACTURED GAS PLANT SITE
SAN FRANCISCO, CALIFORNIA

SITE PLAN

FEBRUARY 2019

FIGURE 2

GIS FILE PATH: \\haleyaldrich.com\share\oak_common\42103_North Beach MGP ROW GW\Global\GIS\Maps\2019-02\128300_006_00MB_GW_MARINA_2018_03.mxd — USER: antichols — LAST SAVED: 1/24/2019 10:19:06 AM

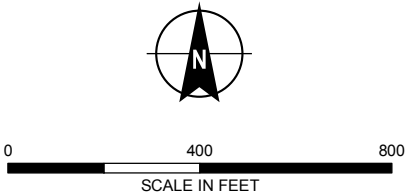


LEGEND

- MONITORING WELL WITH WELL ID AND GROUNDWATER ELEVATION, IN FEET (NAVD88)
- DESTROYED MONITORING WELL
- MULTI-LEVEL MONITORING WELL WITH WELL ID AND GROUNDWATER ELEVATION, IN FEET (NAVD88)
- GROUNDWATER ELEVATION CONTOUR, IN FEET (NAVD88)
- COMBINED STORM AND SANITARY SEWER SYSTEM
- 1893 HISTORICAL SHORELINE AND WHARFS/PIERS
- 1899 HISTORICAL SHORELINE AND WHARFS/PIERS
- HISTORICAL MANUFACTURED GAS PLANT (MGP) SITE BOUNDARY
- HISTORICAL MGP STRUCTURE

NOTES

- ALL LOCATIONS AND DIMENSIONS OF HISTORICAL STRUCTURES AND BOUNDARIES ARE APPROXIMATE.
- APPROXIMATE LIMITS OF FORMER MGP SITE BOUNDARIES AND HISTORICAL STRUCTURES DERIVED FROM SANBORN FIRE INSURANCE MAPS (1893, 1899, 1905) AND PACIFIC GAS & ELECTRIC MAPS (1908).
- APPROXIMATE LOCATION OF HISTORICAL SHORELINES AND WHARFS/PIERS DERIVED FROM SANBORN FIRE INSURANCE MAPS (1893, 1899, 1900).
- GROUNDWATER ELEVATIONS ARE FROM 10 SEPTEMBER 2018. GROUNDWATER ELEVATIONS ARE REPORTED IN FEET, BASED ON THE NORTH AMERICAN VERTICAL DATUM OF 1988 (NAVD88).
- ITALICS INDICATE GROUNDWATER ELEVATIONS FROM WELL NOT USED IN CONTOURING.
- GROUNDWATER ELEVATIONS POSTED FOR WELL PAIRS AND MULTI-LEVEL (CMT) WELLS ARE REPORTED FROM SCREEN INTERVAL CLOSEST TO 0 FT (NAVD88).
- AERIAL IMAGERY SOURCE: CITY AND COUNTY OF SF, 2014



HALEY
ALDRICH

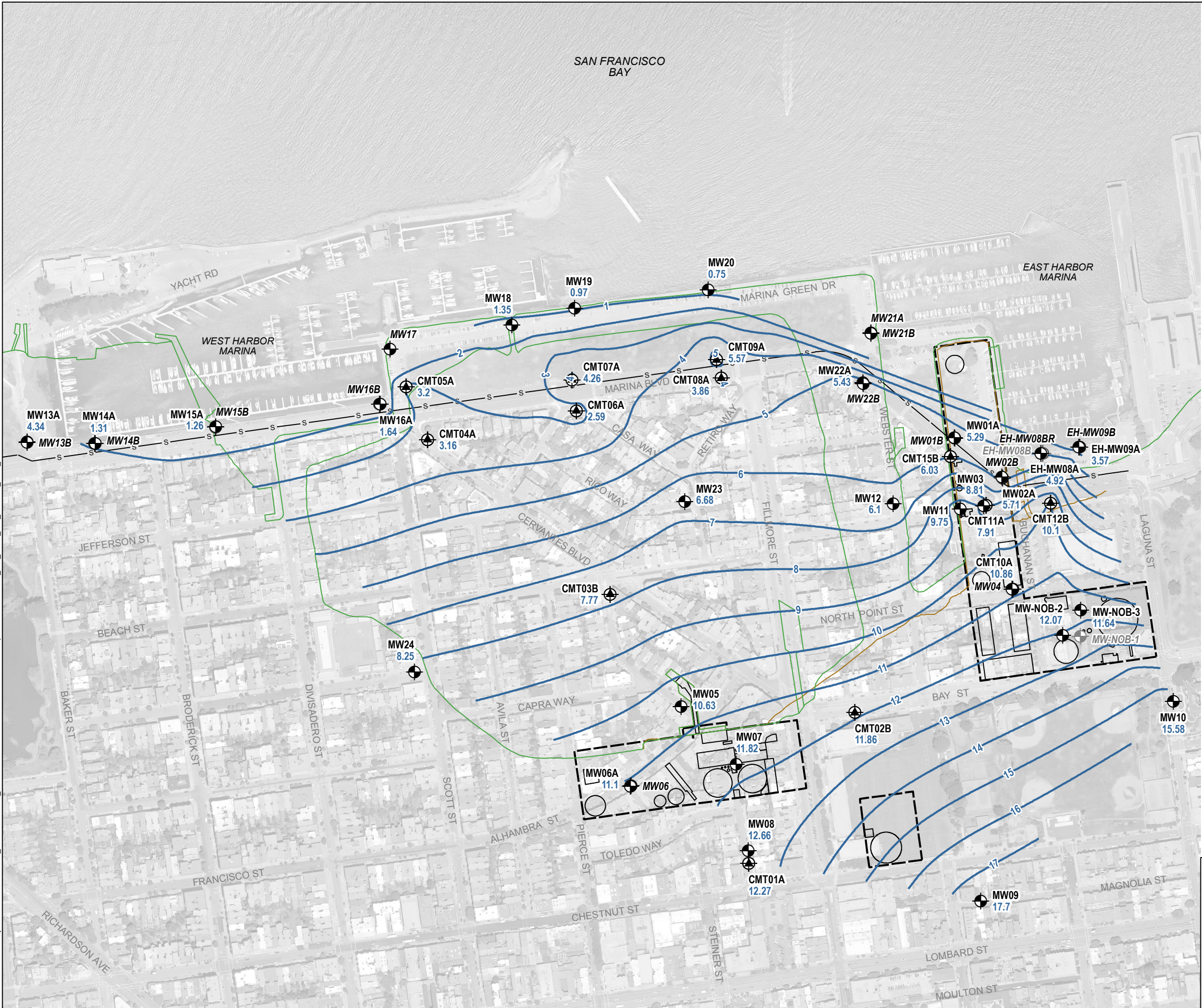
PACIFIC GAS AND ELECTRIC COMPANY (PG&E)
FORMER NORTH BEACH MANUFACTURED GAS PLANT SITE
SAN FRANCISCO, CALIFORNIA

GROUNDWATER ELEVATIONS
THIRD QUARTER

FEBRUARY 2019

FIGURE 3

GIS FILE PATH: \\haleyaldrich.com\share\oak_common\42103_North Beach MGP ROW GW\Global\GIS\Maps\2019-02\128300_006_00MB_GW_MARINA_2018_Q4.mxd — USER: anichols — LAST SAVED: 1/23/2019 10:32:39 AM



LEGEND

- MONITORING WELL WITH WELL ID AND GROUNDWATER ELEVATION, IN FEET (NAVD88)
- DESTROYED MONITORING WELL
- MULTI-LEVEL MONITORING WELL WITH WELL ID AND GROUNDWATER ELEVATION, IN FEET (NAVD88)
- GROUNDWATER ELEVATION CONTOUR, IN FEET (NAVD88)
- COMBINED STORM AND SANITARY SEWER SYSTEM
- 1893 HISTORICAL SHORELINE AND WHARFS/PIERS
- 1899 HISTORICAL SHORELINE AND WHARFS/PIERS
- HISTORICAL MANUFACTURED GAS PLANT (MGP) SITE BOUNDARY
- HISTORICAL MGP STRUCTURE

NOTES

- ALL LOCATIONS AND DIMENSIONS OF HISTORICAL STRUCTURES AND BOUNDARIES ARE APPROXIMATE.
- APPROXIMATE LIMITS OF FORMER MGP SITE BOUNDARIES AND HISTORICAL STRUCTURES DERIVED FROM SANBORN FIRE INSURANCE MAPS (1893, 1899, 1905) AND PACIFIC GAS & ELECTRIC MAPS (1908).
- APPROXIMATE LOCATION OF HISTORICAL SHORELINES AND WHARFS/PIERS DERIVED FROM SANBORN FIRE INSURANCE MAPS (1893, 1899, 1900).
- GROUNDWATER ELEVATIONS ARE FROM 3 DECEMBER 2018. GROUNDWATER ELEVATIONS ARE REPORTED IN FEET, BASED ON THE NORTH AMERICAN VERTICAL DATUM OF 1988 (NAVD88).
- ITALICS INDICATE GROUNDWATER ELEVATIONS FROM WELL NOT USED IN CONTOURING.
- GROUNDWATER ELEVATIONS POSTED FOR WELL PAIRS AND MULTI-LEVEL (CMT) WELLS ARE REPORTED FROM SCREEN INTERVAL CLOSEST TO 0 FT (NAVD88).
- AERIAL IMAGERY SOURCE: CITY AND COUNTY OF SF, 2014

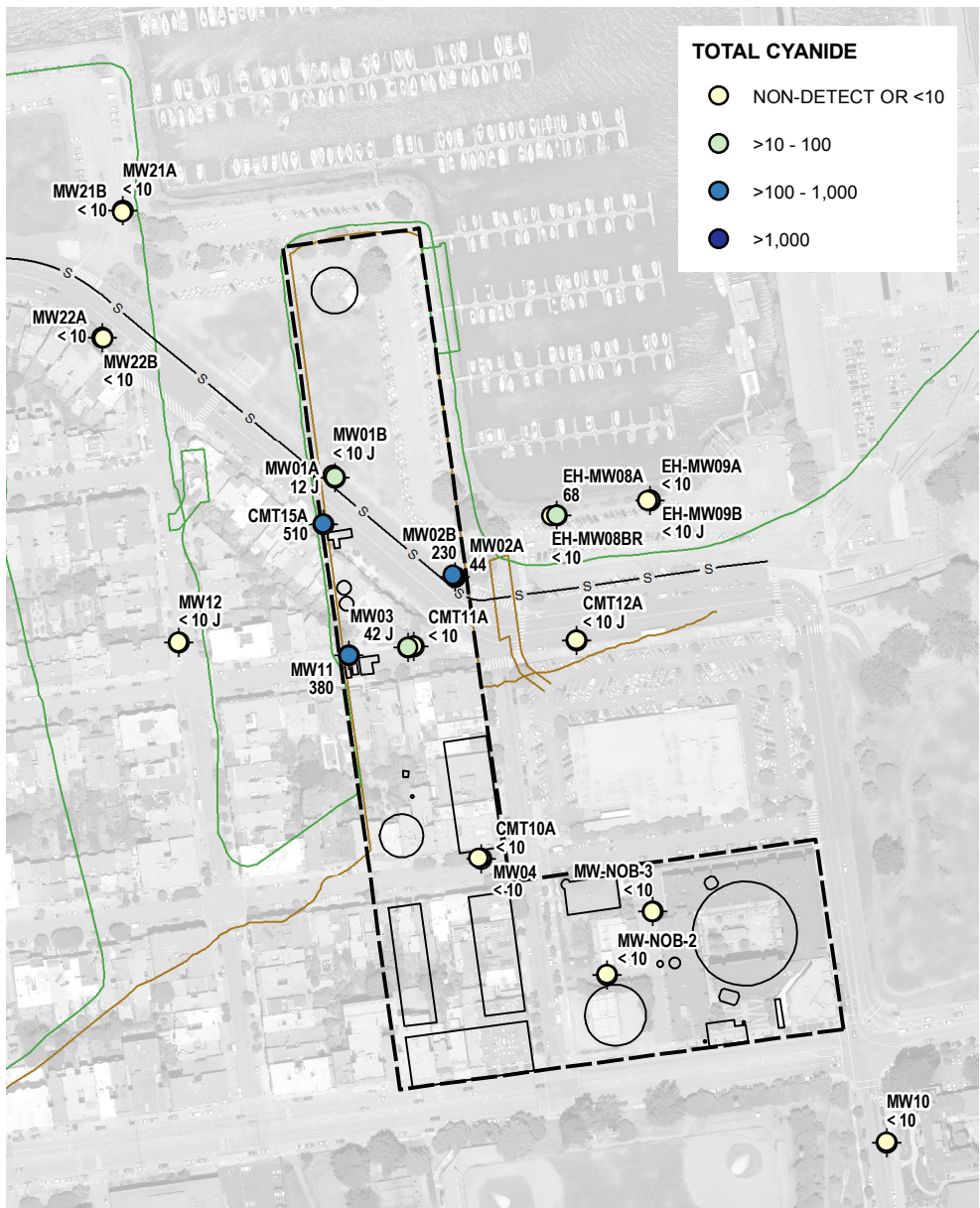
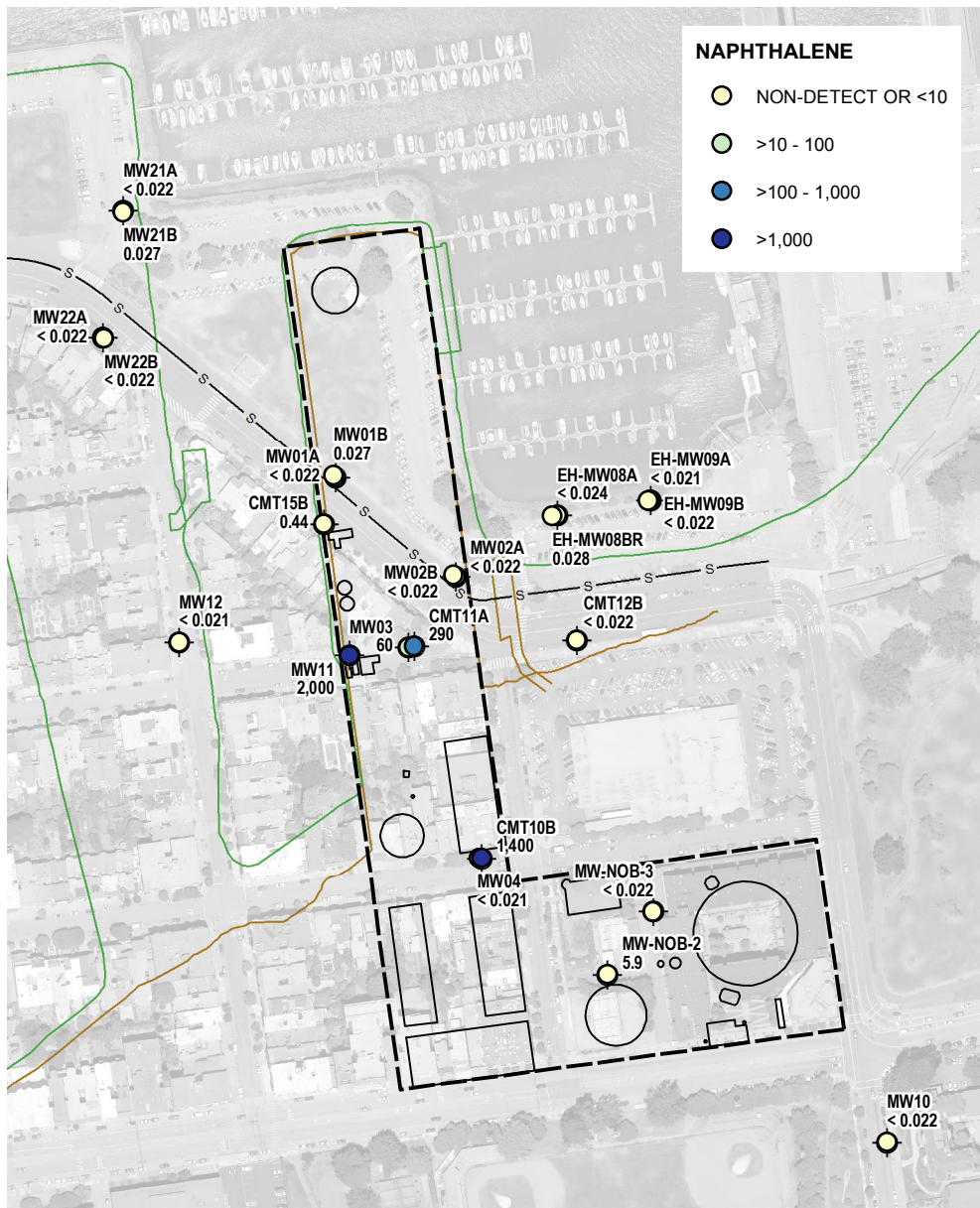
HALEY
ALDRICH

PACIFIC GAS AND ELECTRIC COMPANY (PG&E)
FORMER NORTH BEACH MANUFACTURED GAS PLANT SITE
SAN FRANCISCO, CALIFORNIA

GROUNDWATER ELEVATIONS
FOURTH QUARTER

FEBRUARY 2019

FIGURE 4

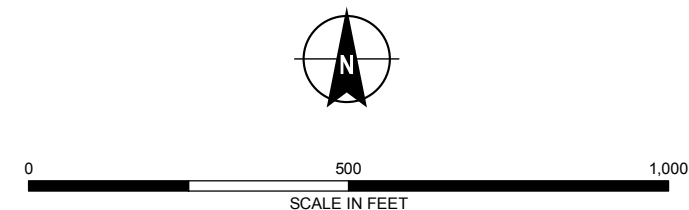


LEGEND

- MONITORING WELL WITH ID AND CHEMICAL CONCENTRATION INDICATED IN $\mu\text{g/L}$
- MULTI-LEVEL MONITORING WELL WITH ID AND CHEMICAL CONCENTRATION INDICATED IN $\mu\text{g/L}$
- s — COMBINED STORM AND SANITARY SEWER SYSTEM
- 1893 HISTORICAL SHORELINE AND WHARFS/PIERS
- 1899 HISTORICAL SHORELINE AND WHARFS/PIERS
- HISTORICAL MANUFACTURED GAS PLANT (MGP) SITE BOUNDARY
- HISTORICAL MGP STRUCTURE

NOTES

- CONCENTRATIONS ARE IN MICROGRAMS PER LITER ($\mu\text{g/L}$).
- GROUNDWATER SAMPLING RESULTS ARE FROM 13-24 SEPTEMBER 2018.
- FOR MULTI-LEVEL MONITORING WELLS, THE MAXIMUM DETECTED CONCENTRATION FOR ALL WELL CHAMBERS IS SHOWN.
- IF A SAMPLE HAS A DUPLICATE, THE MAXIMUM CONCENTRATION BETWEEN THE PRIMARY AND THE DUPLICATE IS SHOWN.
- ABBREVIATIONS:
J = ESTIMATED RESULT
NS = NOT SAMPLED
- BENZENE CONCENTRATIONS BY USEPA METHOD 8260B. NAPHTHALENE CONCENTRATIONS BY USEPA METHOD 8270D SIM. TOTAL CYANIDE CONCENTRATIONS BY USEPA METHOD 9012B.
- ALL LOCATIONS AND DIMENSIONS OF HISTORICAL STRUCTURES AND BOUNDARIES ARE APPROXIMATE.
- APPROXIMATE LIMITS OF FORMER MGP SITE BOUNDARIES AND HISTORICAL STRUCTURES DERIVED FROM SANBORN FIRE INSURANCE MAPS (1893, 1899, 1905).
- APPROXIMATE LOCATION OF HISTORICAL SHORELINES AND WHARFS/PIERS DERIVED FROM SANBORN FIRE INSURANCE MAPS (1893, 1899, 1900).
- AERIAL IMAGERY SOURCE: CITY AND COUNTY OF SF, 2014



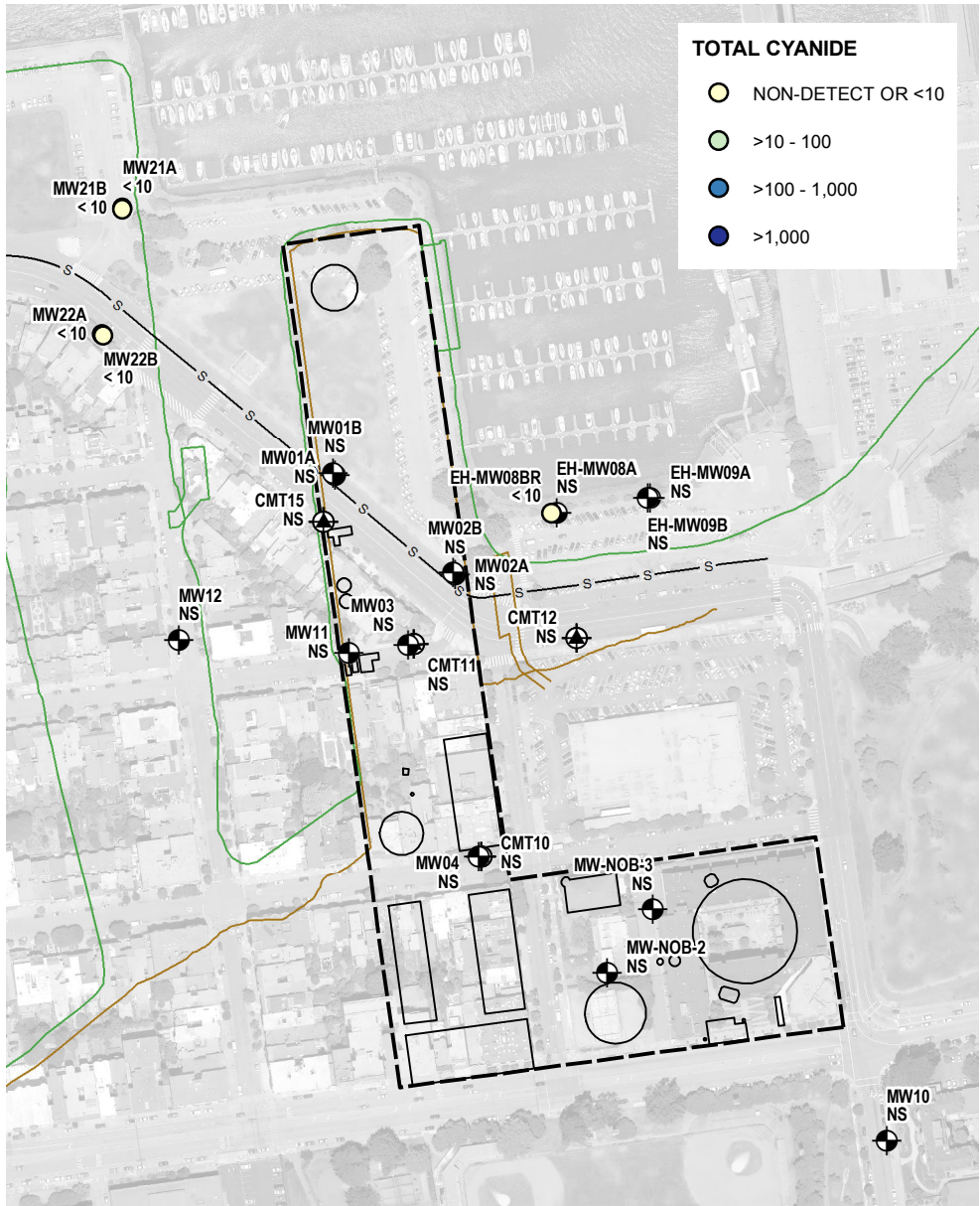
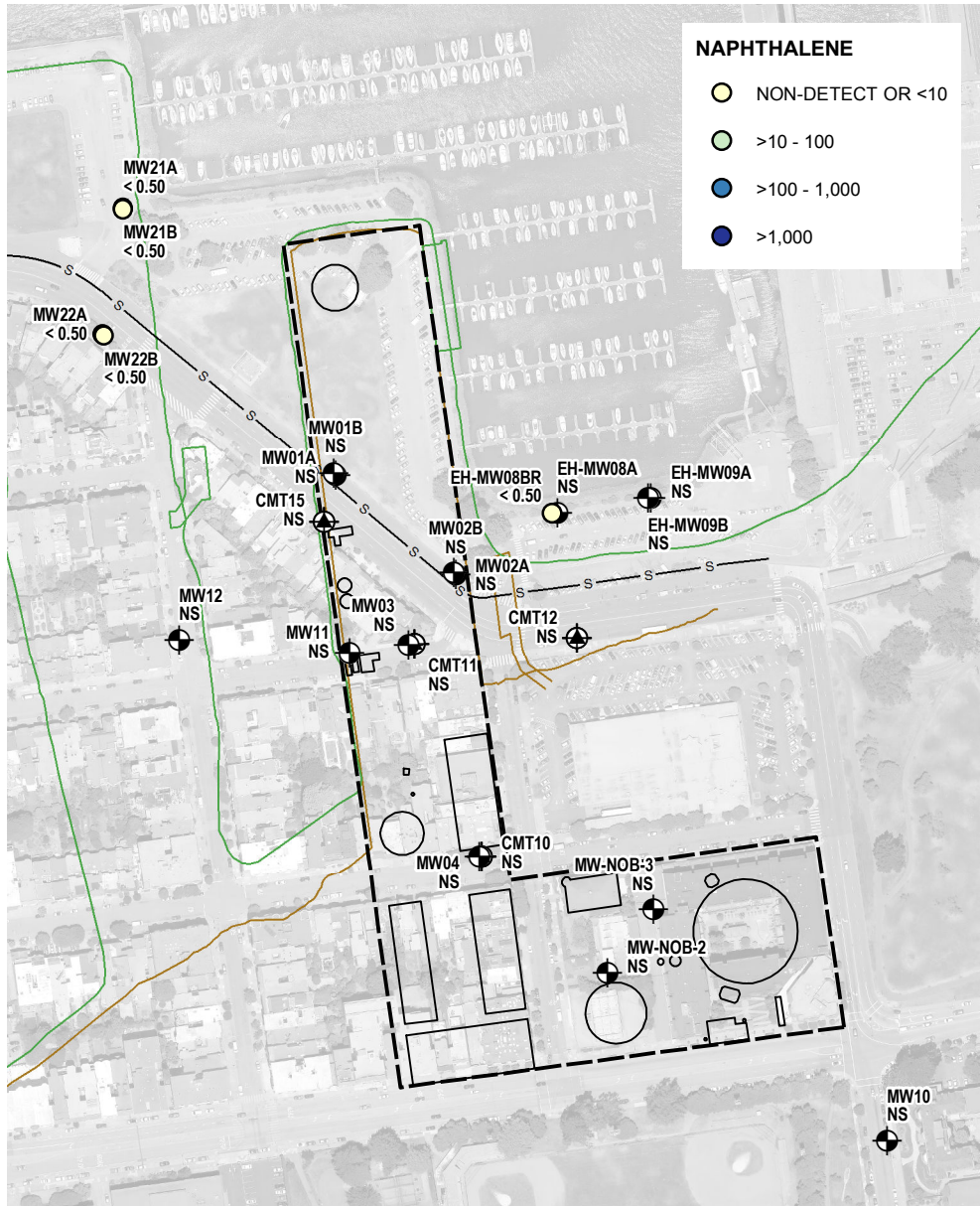
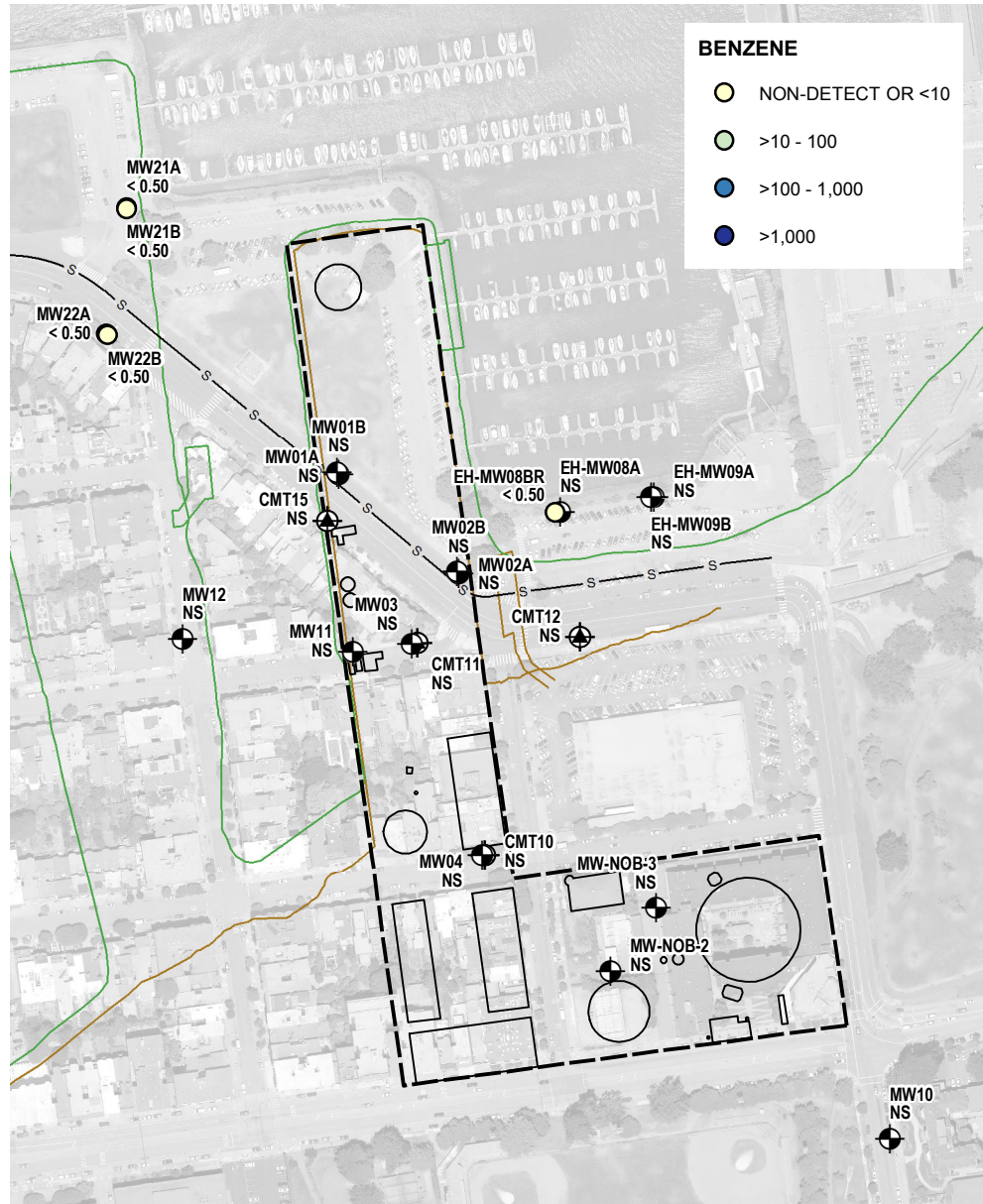
**HALEY
ALDRICH**

PACIFIC GAS AND ELECTRIC COMPANY (PG&E)
FORMER NORTH BEACH MANUFACTURED GAS PLANT SITE
SAN FRANCISCO, CALIFORNIA

**SELECTED ANALYTE
CONCENTRATIONS
IN GROUNDWATER
THIRD QUARTER**

FEBRUARY 2019

FIGURE 5

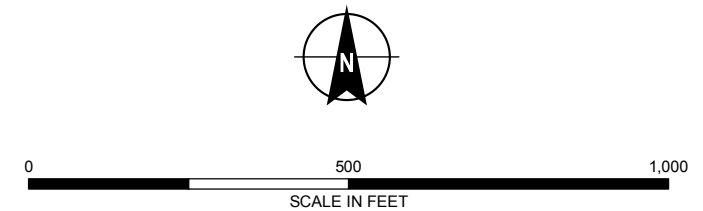


LEGEND

- MONITORING WELL WITH ID AND CHEMICAL CONCENTRATION INDICATED IN $\mu\text{g/L}$
- MULTI-LEVEL MONITORING WELL WITH ID AND CHEMICAL CONCENTRATION INDICATED IN $\mu\text{g/L}$
- s — COMBINED STORM AND SANITARY SEWER SYSTEM
- 1893 HISTORICAL SHORELINE AND WHARFS/PIERS
- 1899 HISTORICAL SHORELINE AND WHARFS/PIERS
- HISTORICAL MANUFACTURED GAS PLANT (MGP) SITE BOUNDARY
- HISTORICAL MGP STRUCTURE

NOTES

- CONCENTRATIONS ARE IN MICROGRAMS PER LITER ($\mu\text{g/L}$).
- GROUNDWATER SAMPLING RESULTS ARE FROM 3-4 DECEMBER 2018.
- FOR MULTI-LEVEL MONITORING WELLS, THE MAXIMUM DETECTED CONCENTRATION FOR ALL WELL CHAMBERS IS SHOWN.
- IF A SAMPLE HAS A DUPLICATE, THE MAXIMUM CONCENTRATION BETWEEN THE PRIMARY AND THE DUPLICATE IS SHOWN.
- ABBREVIATIONS:
J = ESTIMATED RESULT
NS = NOT SAMPLED
- BENZENE CONCENTRATIONS BY USEPA METHOD 8260B. NAPHTHALENE CONCENTRATIONS BY USEPA METHOD 8270D SIM. TOTAL CYANIDE CONCENTRATIONS BY EPA METHOD 9012B.
- ALL LOCATIONS AND DIMENSIONS OF HISTORICAL STRUCTURES AND BOUNDARIES ARE APPROXIMATE.
- APPROXIMATE LIMITS OF FORMER MGP SITE BOUNDARIES AND HISTORICAL STRUCTURES DERIVED FROM SANBORN FIRE INSURANCE MAPS (1893, 1899, 1905).
- APPROXIMATE LOCATION OF HISTORICAL SHORELINES AND WHARFS/PIERS DERIVED FROM SANBORN FIRE INSURANCE MAPS (1893, 1899, 1900).
- AERIAL IMAGERY SOURCE: CITY AND COUNTY OF SF, 2014



HALEY
ALDRICH

PACIFIC GAS AND ELECTRIC COMPANY (PG&E)
FORMER NORTH BEACH MANUFACTURED GAS PLANT SITE
SAN FRANCISCO, CALIFORNIA

SELECTED ANALYTE
CONCENTRATIONS
IN GROUNDWATER
FOURTH QUARTER

FEBRUARY 2019

FIGURE 6