

San Francisco Bay

Former Fillmore MGP

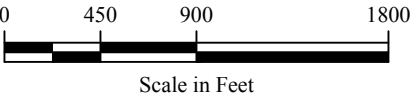
Former North Beach MGP

Former Beach Street MGP

Legend:

--- Court Mediated Investigation area boundary

Aerial photo source U.S. Geological Survey High Resolution Orthoimagery for the San Francisco-Monterey, California Coastal Area





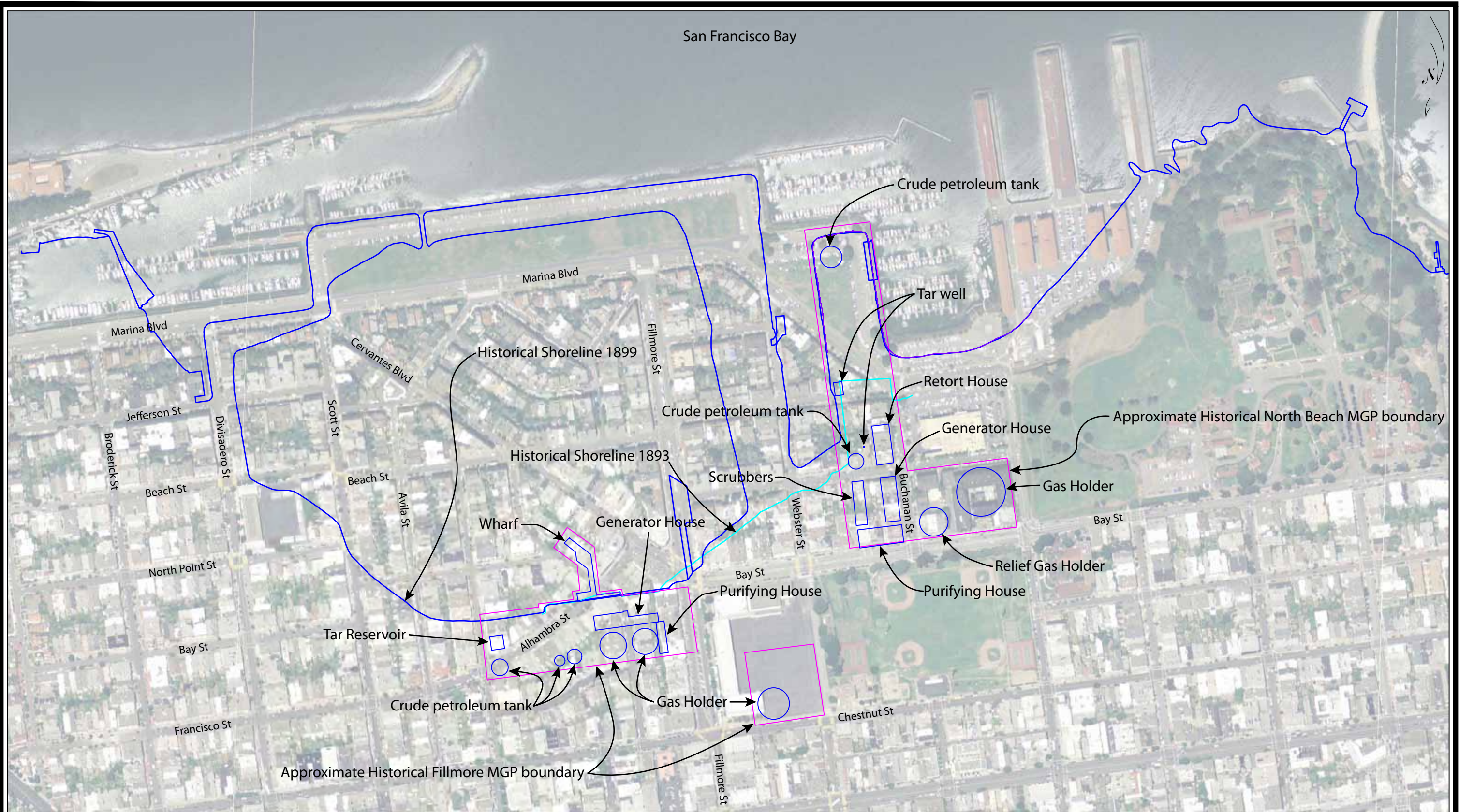
**EnviroAssets, Inc.**  
www.EnviroAssets.com  
V: (888) 748-8820  
V: (510) 346-9500 F: (510) 346-9501

No.	Date	Revision	Approved	Date:	12/12/2016
				Drawn:	MH
				File Name:	EA21634-16

COURT MEDIATED INVESTIGATION AREA  
Court Mediated Investigation  
San Francisco  
California

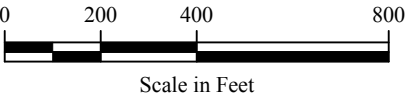
Figure
1
Project
EA244





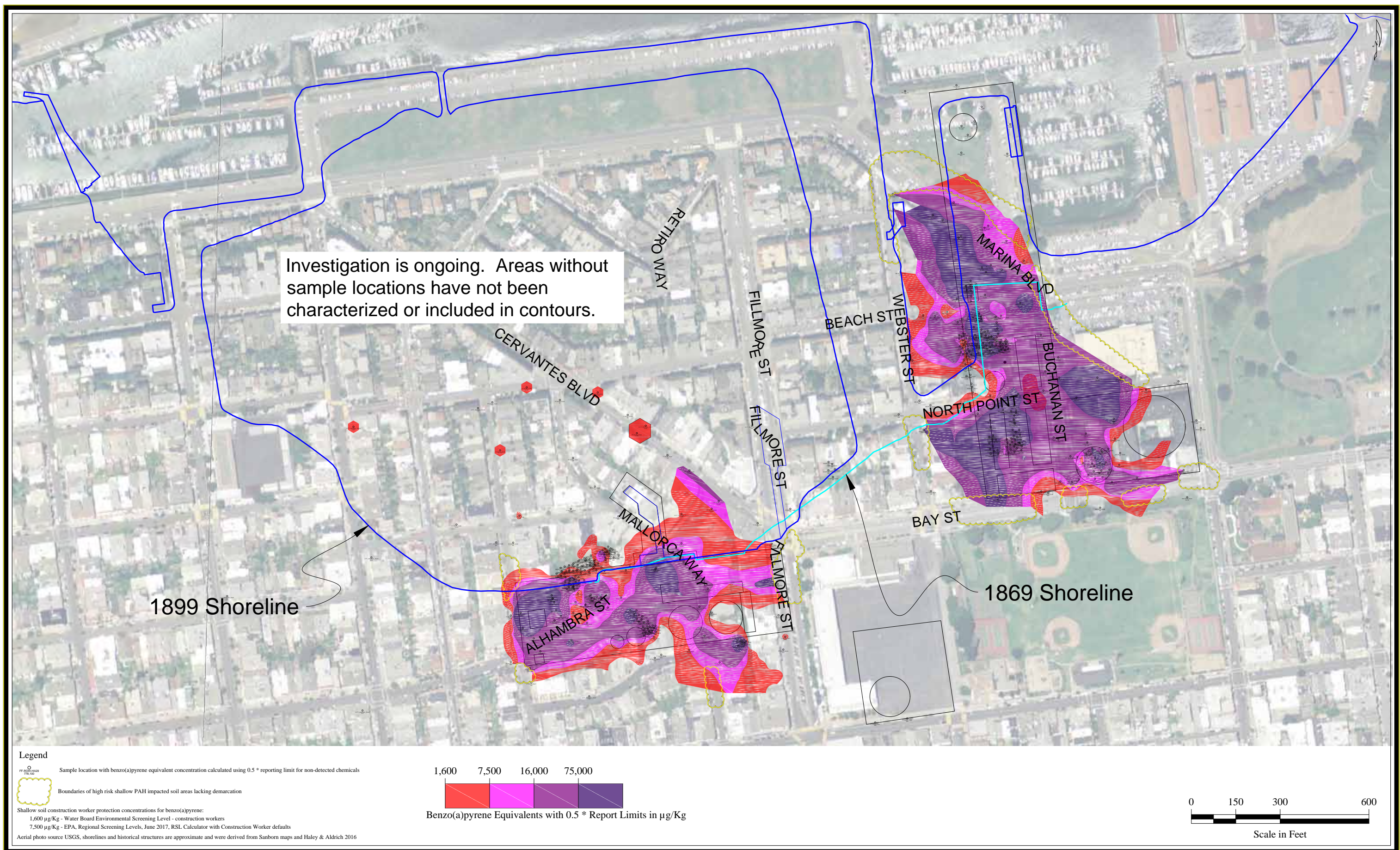
Legend:

Aerial photo source U.S. Geological Survey High Resolution Orthoimagery for the San Francisco-Monterey, California Coastal Area

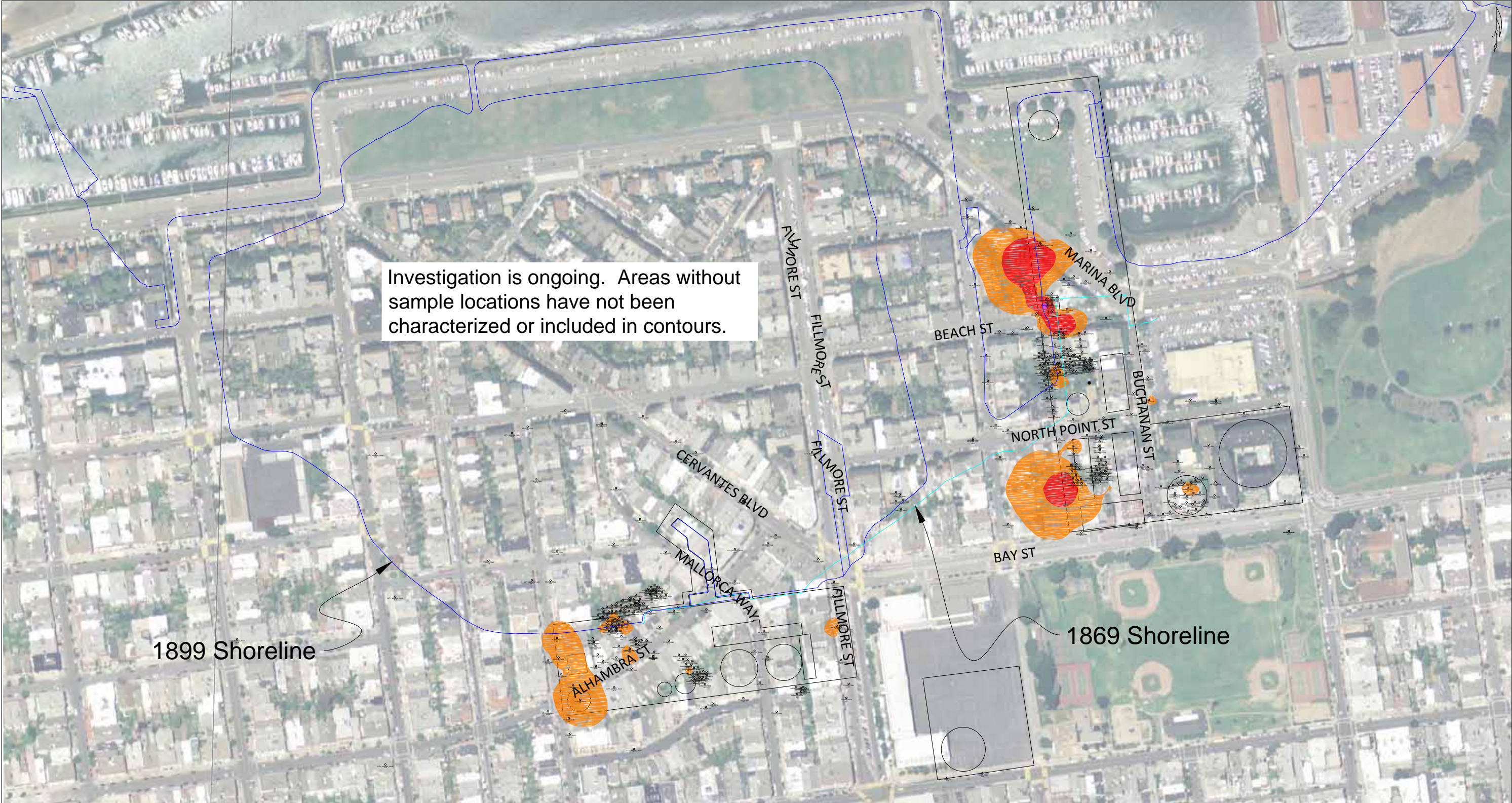


No.	Date	Revision	Approved	Date:	12/12/2016
				Drawn:	MH
				File Name:	EA21634-16










**Legend**

 Sample location with cyanide soil data

5      20      100      150



Cyanide (total) in mg/Kg

0      150      300      600



Scale in Feet

Aerial photo source USGS, shorelines and historical structures are approximate and were derived from Sanborn maps and Haley & Aldrich 2016





Legend


 Sample location with cyanide groundwater data

50 150 500 1000 1500



Cyanide (total) in  $\mu\text{g/L}$

0 150 300 600



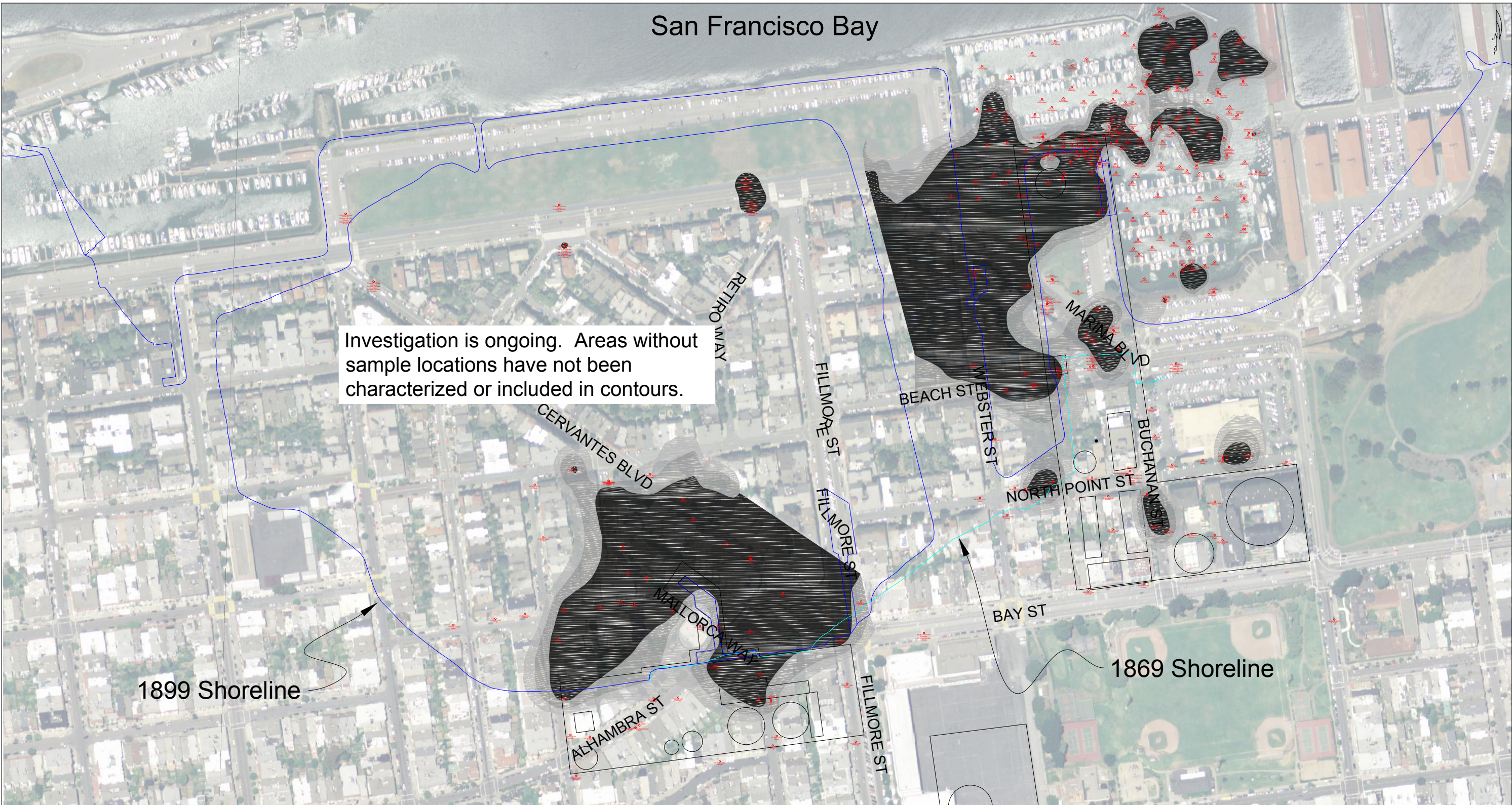
Scale in Feet

Aerial photo source USGS, shorelines and historical structures are approximate and were derived from Sanborn maps and Haley & Aldrich 2016

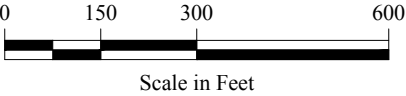
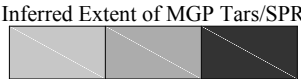
No.	Date	Revision	Approved	Date:	10/16/2017
				Drawn:	MH
				File Name:	EA22821-17



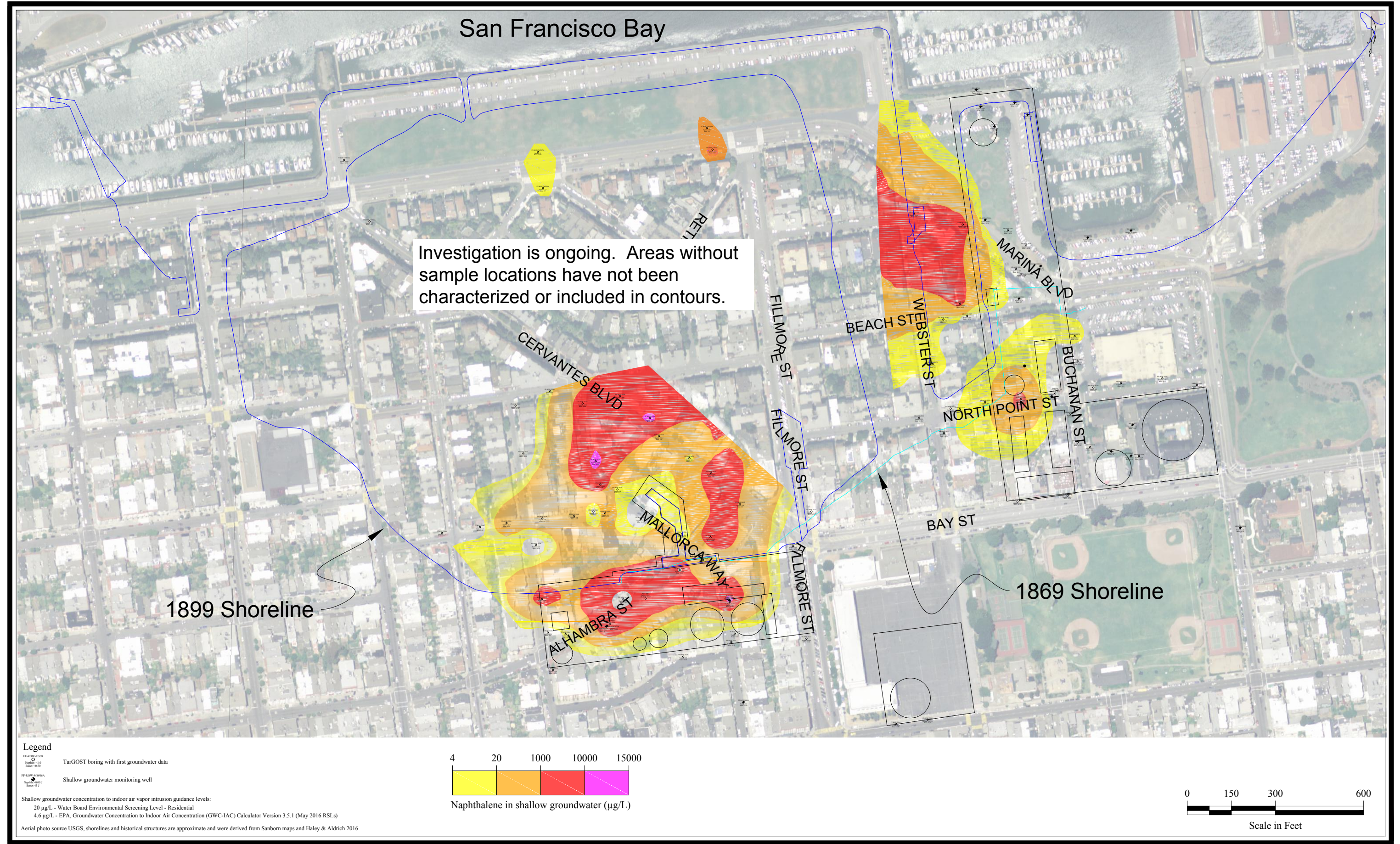
San Francisco Bay



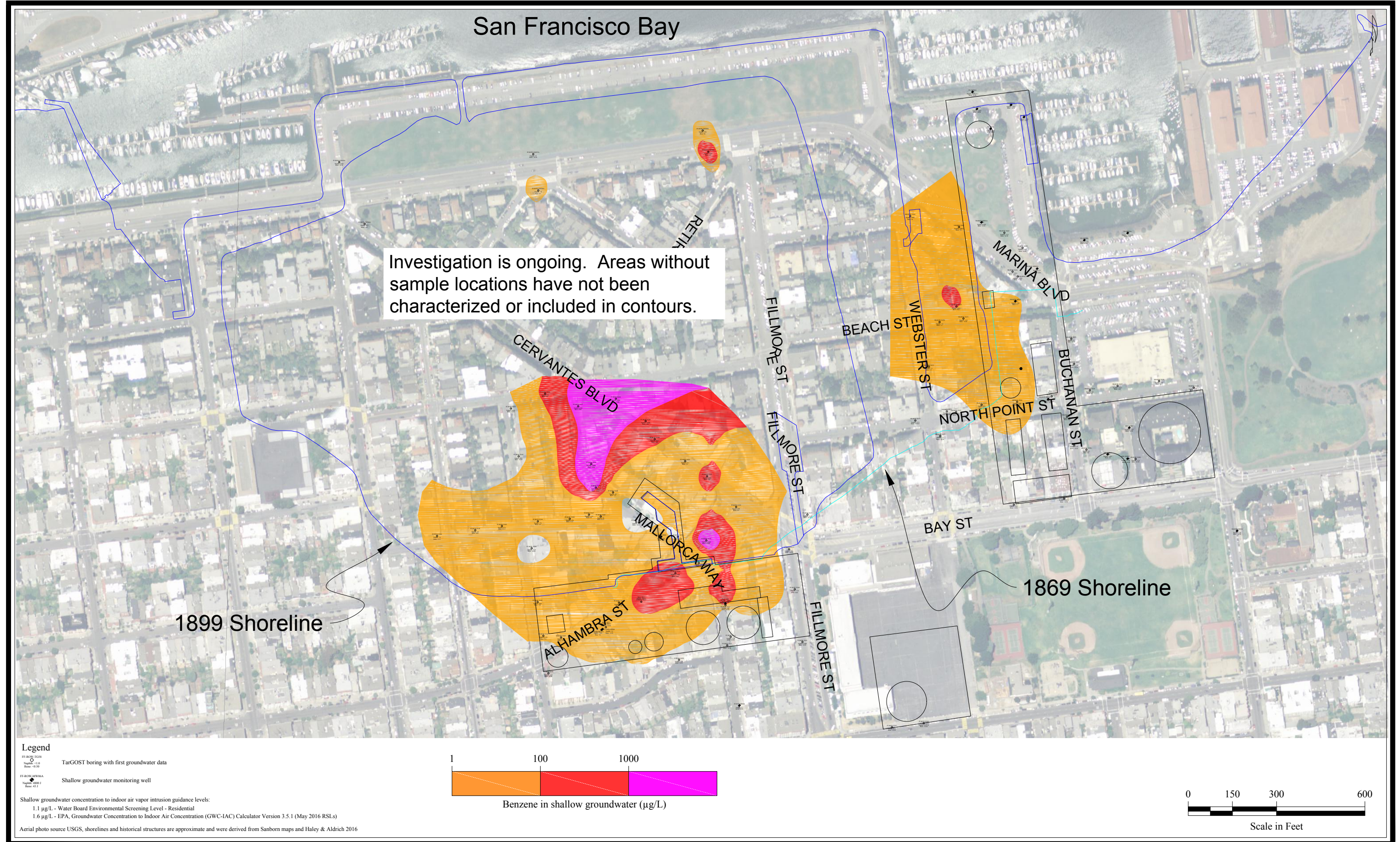
Legend:  
Area of estimated Separate Phase MGP Residue shaded grey to black  
Sample location and chemical observation/results  
SPR Separate Phase MGP Residue identified with visual observation on boring log or TarGOST response  
23000.0 ug/L Naphthalene concentration in groundwater  
25320000ug/kg Summed 16 Polyaromatic Hydrocarbons (PAHs) in sediment  
Aerial photo source USGS, shorelines and historical structures are approximate and were derived from Sanborn maps and Haley & Aldrich 2016














Mapsource:  
U.S.COAST SURVEY  
Benjamin Peirce Superintendent  
1869



PRICE \$1.50  
Verified  
J.E. Hilgard  
Assist Coast Survey  
In charge of Office.

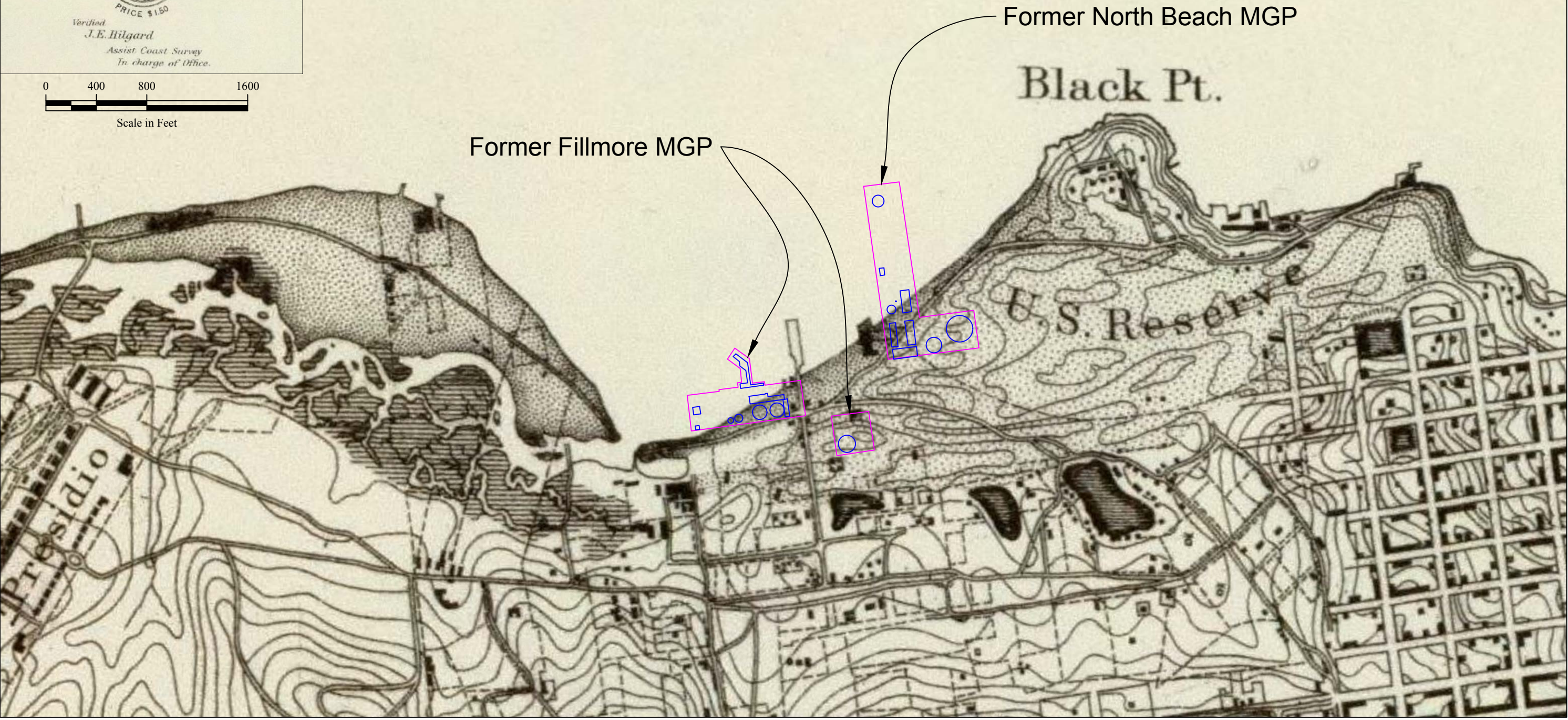
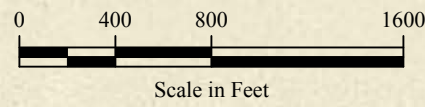
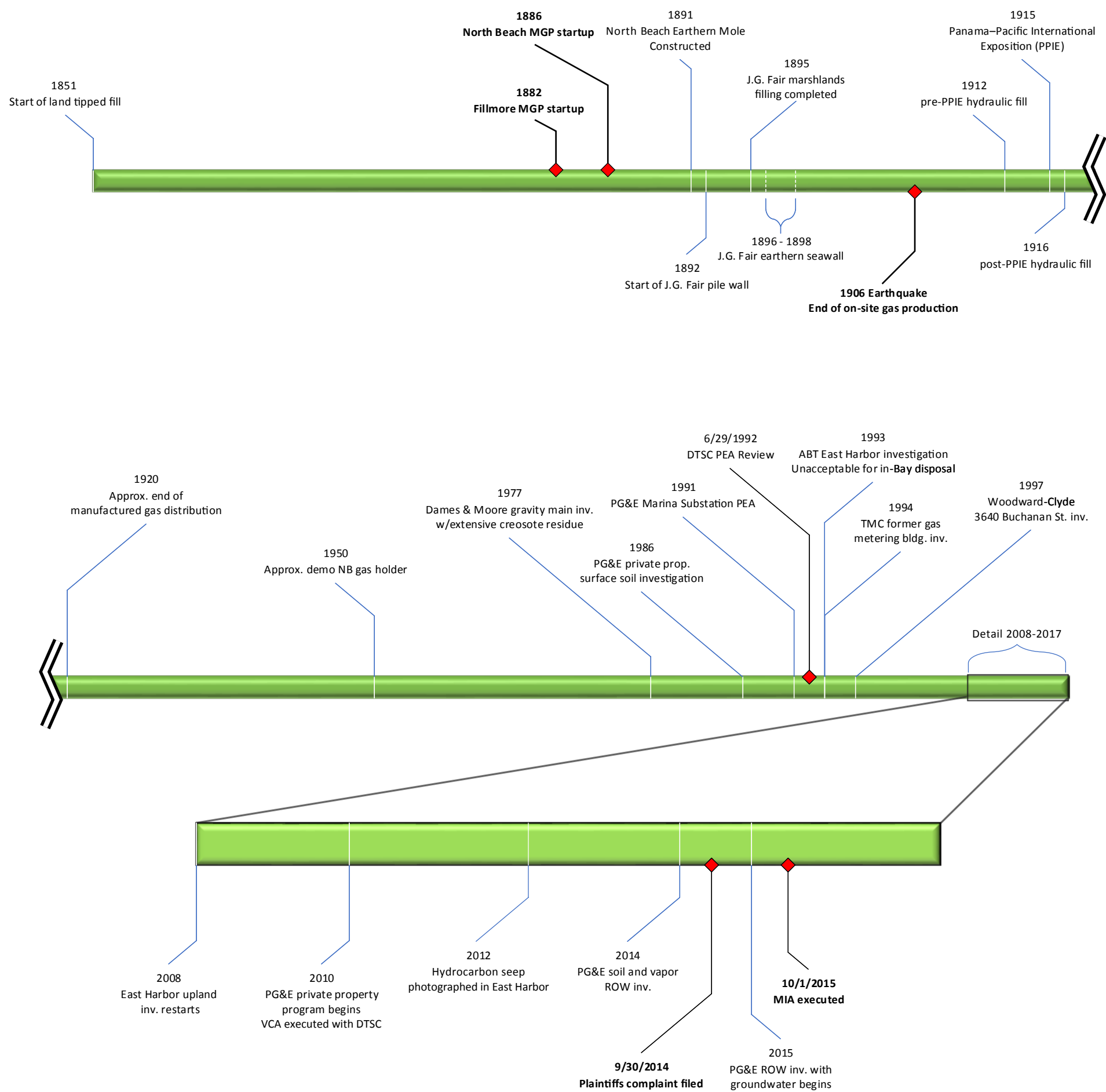




FIGURE 10: MARINA DISTRICT TIMELINE

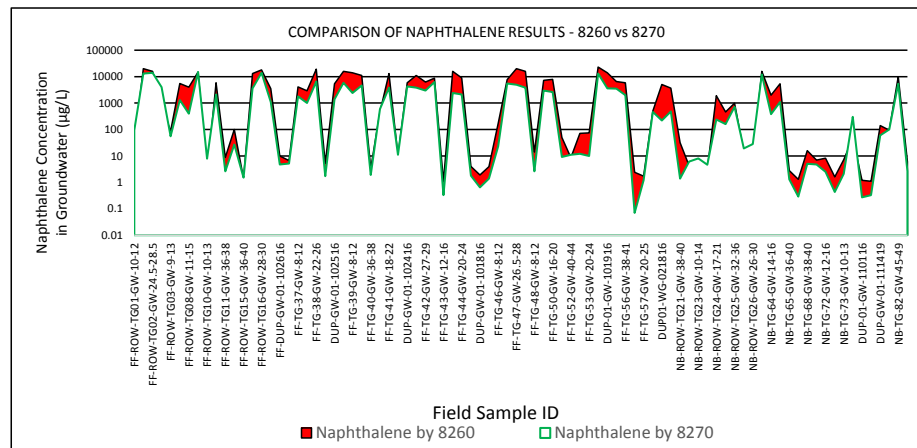


Note:  
NB North Beach MGP  
DTSC Department of Toxic Substances Control  
PPIE Panama-Pacific International Exposition  
PEA Preliminary Endangerment Assessment  
VCA Voluntary Cleanup Agreement  
ROW Right-of-way  
MIA Mediated Investigation Agreement between Plaintiffs and PG&E



FIGURE 11: COMPARISON OF 8260 AND 8270 GROUNDWATER RESULTS FOR NAPHTHALENE

### Grab groundwater sample comparison



### Monitoring well groundwater sample comparison

